

Flag 8b	Address 8b (ext)	Control 8b or 16b	Information variable	FCS 16b or 32b	Flag 8b
------------	---------------------	----------------------	-------------------------	-------------------	------------

Frame format

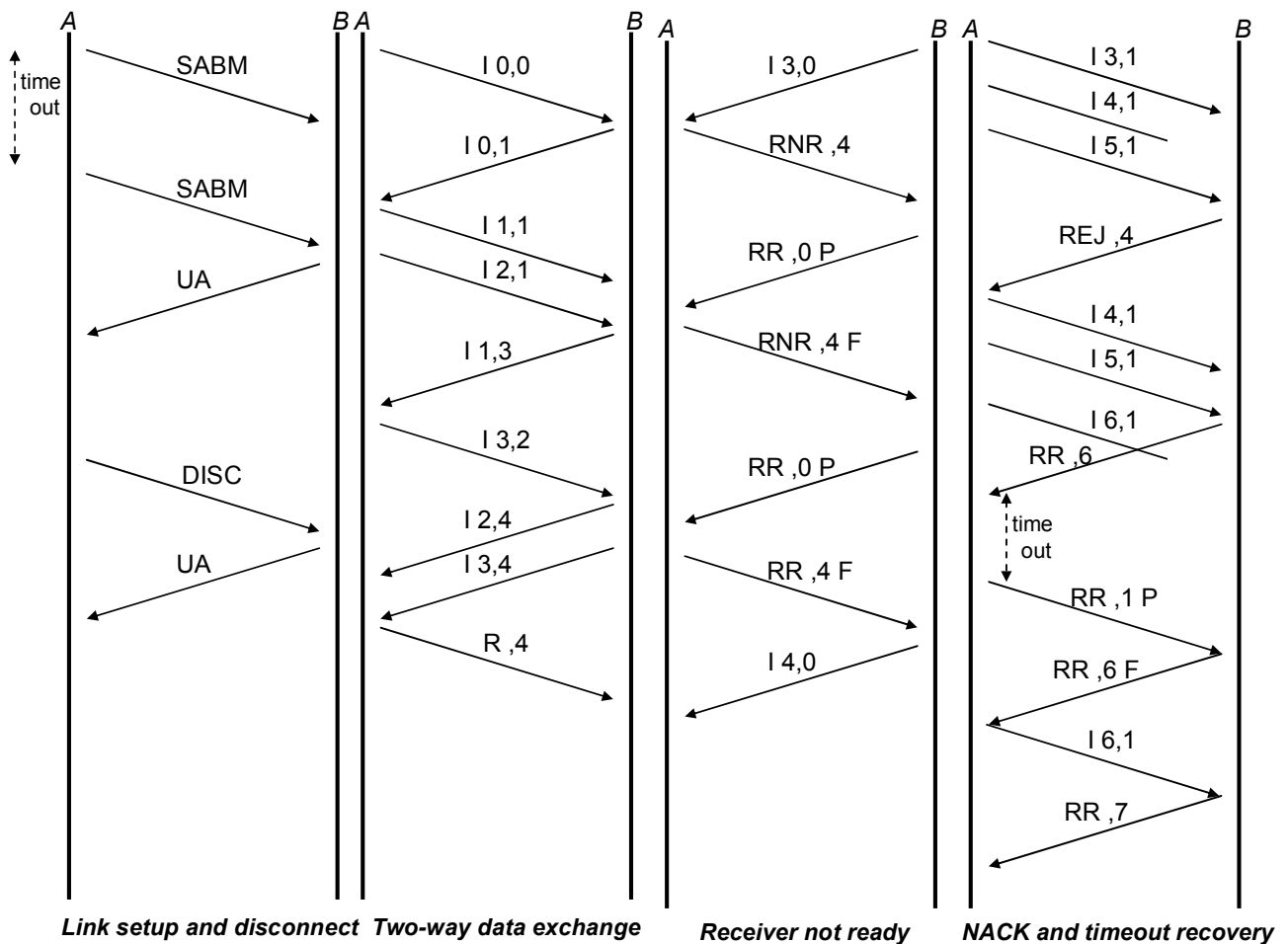
0	N(S)	P/F	N(R)
1	0	S	P/F
1	1	M	P/F

N(S) – send sequence number
N(R) – receive sequence number
S – Supervisory function bits
M – Unnumbered function bits
P/F – poll/final bits

Control field format:
 Information, Supervisory, Unnumbered

0	N(S)				P/F	N(R)
1	0	S	0	0	0	0

Extended Control field format:
 Information, Supervisory



Supervisory commands

RR Receive ready
 REJ Reject
 RNR Receive not ready
 SREJ Selective reject

Unnumbered commands

SARM Set asynchronous response mode
 RNRM Set normal response mode
 SABM Set asynchronous balanced mode

SARME Set asynchronous response mode extended
 RNRME Set normal response mode extended
 SABME Set asynchronous balanced mode extended

DISC Disconnect
 SIM Set initialization mode

Unnumbered responses

UA Unnumbered acknowledgement
 DM Disconnected mode
 RIM Request initialization mode

Mode-setting

Data transfer

UP Unnumbered poll
 UI Unnumbered information

UI Unnumbered information

Recovery

RSET Reset

FRMR Frame reject

Miscellaneous

XID Exchange identification

XID Exchange identification
 RD Request disconnect

Classes of procedures

Unbalanced Normal Class, Unbalanced Asynchronous Class, Balanced Asynchronous Class

Commands: I, RR, RNR, SNRM (SARM, SABM), DISC
 Responses: I, RR, RNR, UA, DM, FRMR (SARM, SABM)
 Options:

1. add XID (C,R)
2. add RD (R)
3. add REJ (C,R)
4. add UI (C,R)
5. add SID (C)
6. add UP (C)
7. numbering module 128
8. delete I(R)
9. delete I(C)
10. extended control field
11. add RSET (C)